



PEARSON  
Longman

**NEW**

**LONGMAN**

**Real**

**TOEIC**

Actual Tests *for*  
**Reading Comprehension**

**RC**



NHÀ XUẤT BẢN TỔNG HỢP  
THÀNH PHỐ HỒ CHÍ MINH

**NTV**

Công ty TNHH  
Nhân Trí Việt



## Longman New Real TOEIC® Actual Test RC

---

Copyright © 2009, 2012 Pearson Education Korea, Ltd.

Published in Vietnam, 2012

This edition is published in Vietnam under a license Agreement between Pearson Education Korea, Ltd. and Nhan Tri Viet Co., Ltd. Vietnam through Imprima Korea Agency, Korea.

All rights reserved. No part of this publication may be reproduced, stored in a retrieval system, or transmitted, in any form or by any means, electronic, mechanical, photocopying, recording, or otherwise, without the prior written permission of the copyright owner.



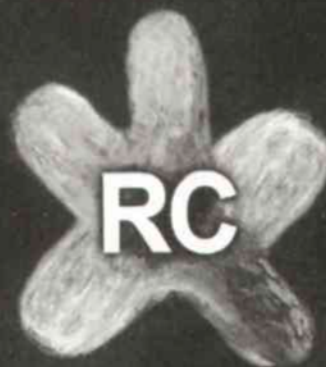
NEW

LONGMAN

Real

TOEIC

Actual Tests *for*  
Reading Comprehension



NHÀ XUẤT BẢN TỔNG HỢP  
THÀNH PHỐ HỒ CHÍ MINH

NTV

Công ty TNHH  
Nhân Trí Việt



# Preface

It has been more than one year since the first release of our Real TOEIC title and we have received very positive feedback from our readers, saying they find the book very helpful and totally different from other titles available on the market. This New Real TOEIC with improved features is designed to be your companion on the road of conquering the TOEIC test.

When the new TOEIC test was first administered in May 2006, many testtakers were worried that they might never get a high score due to a substantial change in the test format, and rushed to buy textbooks which claimed to prepare themselves for the new test. Unluckily, these books often do not live up to their claims, leaving many testtakers a feeling of frustration and further anxiety.

New Real TOEIC is different!

Through our extensive research, we have finally come up with secrets to help you conquer the "New TOEIC Monster". Using this book, you will start with small but stable steps towards a guaranteed high score at the end. This is not another groundless marketing claim!

Many people have contributed to the release of this new version. Among them are: Jun-yeong, Bo-yu and Se-jun, whose English is even better than their Korean thanks to their many long years studying in the US; Back Ji-yeong, Jeon Sang-su-ri and Kim Su-Yeon, who have carefully proofread the whole version, and especially O Yong-jin, President of Pearson Longman Korea; Jeong Jong-dac and Bak Sang-yong of the same company, who have given their tremendous support throughout the process of making this product available to our testtakers.

**New Real TOEIC staff**



# New Real TOEIC \_ Building Skills for the New TOEIC

## Structure & Feature, Preview

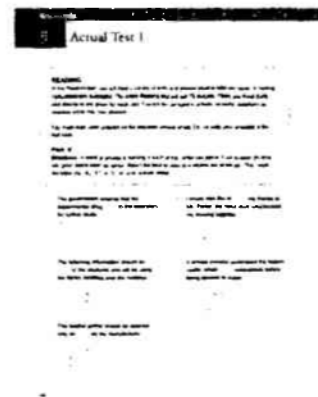
### ❖ Pre-Actual Test

The Pre-Actual Test in Chapter 1 is to provide testtakers with a model Listening / Reading TOEIC test so that they can self-assess their ability and define areas that need intensive training.



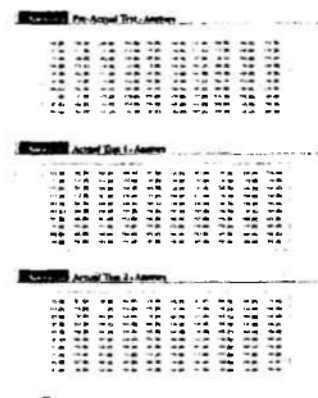
### ❖ Actual Test

There are 8 actual tests in each Real TOEIC book with test items designed to reflect the most current tendency in the real TOEIC tests.



### ❖ Answers

The Answers Section is provided at the back of each book to help testtakers check their answers and monitor their progress.



# About NEW TOEIC

## New TOEIC

### • Listening Comprehension

As TOEIC stands for Test of English for International Communication, there is the need to assess proficiency by aligning questions with everyday language scenarios that happen in today's workplace. Tasks in the new TOEIC test are more authentic and there is a wider range of English accents compared to the previous version.

### • How is the new TOEIC different?

The new Listening Section has four major changes:

- a decrease in the number of photograph questions in Part 1 (from 20 to 10)
- the use of both recorded and written questions in Part 3 (conversations) and Part 4 (short talks). In Part 3, there are more conversational exchanges, from A-B-A to A-B-A-B.
- an increase in number of questions that follow each talk in Part 4 (3 questions instead of 2-3 in the earlier version)
- the use of different English accents, as spoken in the U.S., Great Britain, Canada and Australia

The new Reading Section has three major changes:

- the elimination of Part 6 (error recognition questions)
- the addition of text completion questions (Part 6)
- the inclusion of reading sets of questions based on two interrelated passages (Part 7)



Comparison between the old TOEIC and the new TOEIC:

	Old TOEIC	New TOEIC
	<b>Listening Comprehension Section 1</b>	
Part		
1	Photographs: 20 questions	Photographs: 10 questions
2	Question & Response: 30 questions	Question & Response: 30 questions
3	Short Conversations: 30 questions (30 conversations, 1 question each)	Short Conversations: 30 questions (10 conversations, 3 questions each)
4	Short Talks: 20 questions (6-9 talks, 2-4 questions each)	Short Talks: 30 questions (10 talks, 3 questions each)
	<b>Reading Comprehension Section 2</b>	
5	Incomplete Sentences: 40 questions	Incomplete Sentences: 40 questions
6	Error Recognition: 20 questions	Text Completion: 12 questions (4 reading sets, 3 questions each)
7	Reading Comprehension: 40 questions	Reading Comprehension: 48 questions (single passages: 28 questions; double passages: 20 questions)

# The NEW TOEIC in details

## Listening Comprehension

### ☼ Part 1

- 10 picture-based questions (Q.1-10)
- There is a 25-second Direction for the whole Listening Section and a 70-second Direction for Part 1, which makes a total of 1 minute and 35 seconds before question 1 begins.
- There is a 5-second pause between every two questions.
- At the end of one page, you will hear the direction "Go on to the next page." The elapsing time between that point to the next question on a new page is 12 seconds. During this time, you should look ahead at the next 4 pictures on the new pages.
- You should mark your answers directly on the Answer Sheet while you are listening to the questions.

### ☼ Part 2

- 30 questions ( Q.11-40)
- There is a 1-minute Direction for Part 2.
- There is a 5-second pause between every two questions.
- Approximately 10-15 questions begin with WH- (what, when, who, whose, why, how, which, where).
- Since the question format remains much the same throughout Part 2, testtakers tend to lose concentration starting from questions 35-40. It is essential that you practice answering all these 30 questions in one session without breaking them in several chunks.
- If you are not sure of any one question, just skip it and concentrate on the next one.
- You should mark your answers directly on the Answer Sheet while you are listening to the questions.